

## SOFTQ BASIC SOFTWARE UNDER WINDOWS VISTA AND WINDOWS 7

This document will guide you step by step in how to configure the softQ Basic version 1.0 properly when the system runs under windows Vista and/or windows 7 environments.

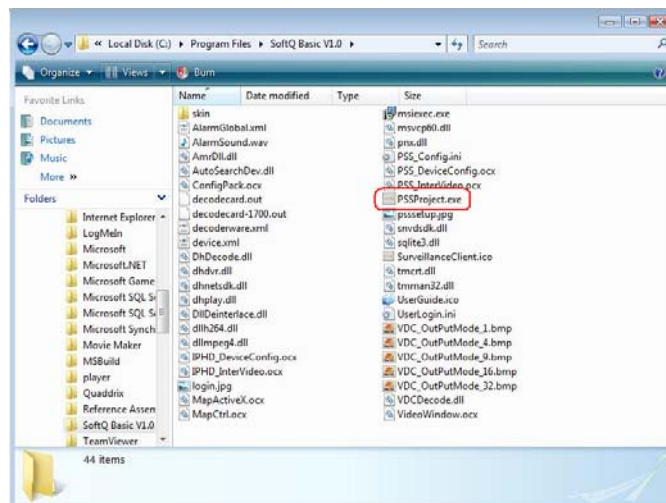
Once you have fully installed the softQ Basic NVR software in your vista or 7 system, then:

1. Locate the softQ Basic installation folder in your system, the default path is:

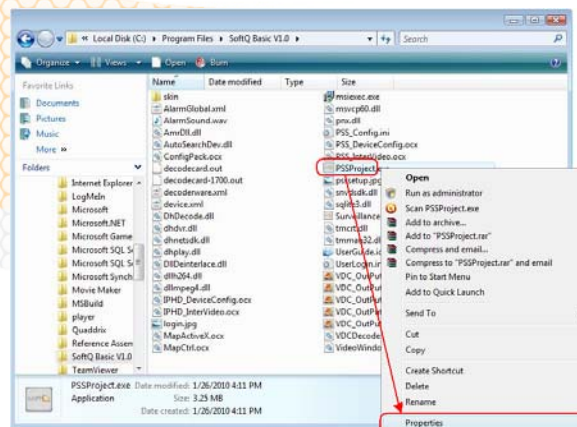
**C: \Program Files\SoftQ Basic V1.0**

If during the software installation you choose a different destination folder, you must go to the chosen destination folder to perform these settings.

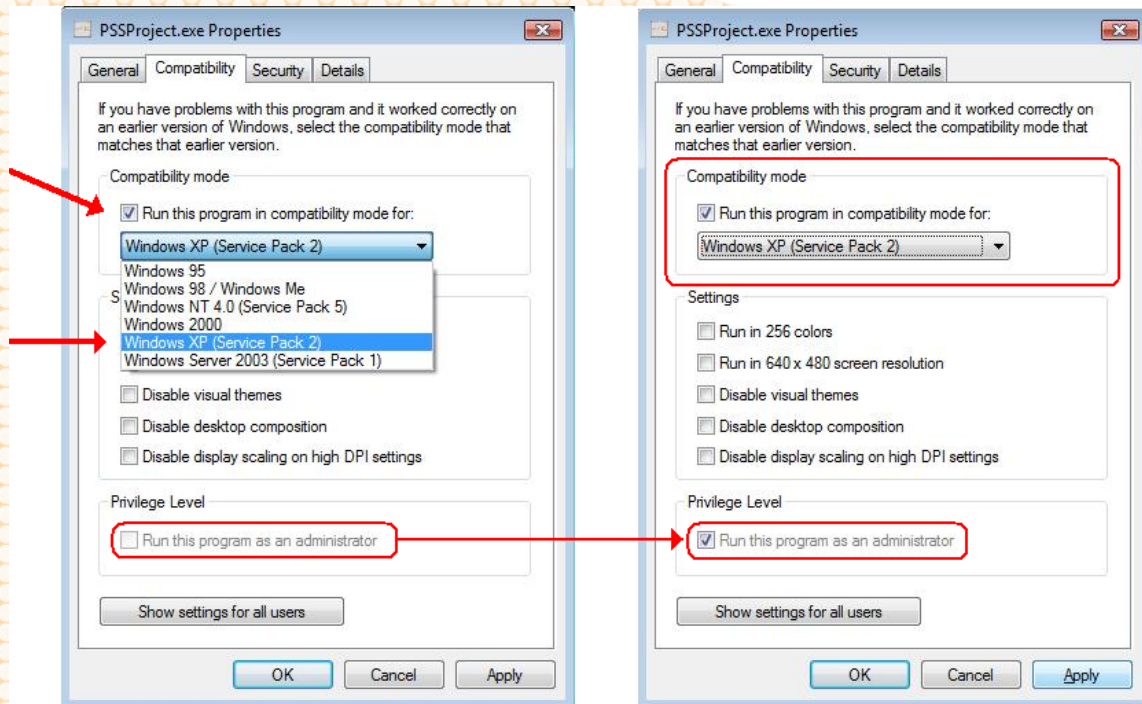
2. Once you have found the software destination folder in your system, then find the following executable file **"PSS Project.exe"**



3. Make right click over this PSS Project icon and select the properties option.



- Now in the properties window interface if the .exe file select the compatibility tag and enable the compatibility mode; then select the software to run in compatibility for Windows XP SP2, then enable the run as administrator check box as shown in the following picture.



- Finally click on the **“Apply”** button to save and make effective all the changes made and then click on **“OK”** button.

Now you the software will be ready to run properly in systems with Windows Vista and/or Windows 7.