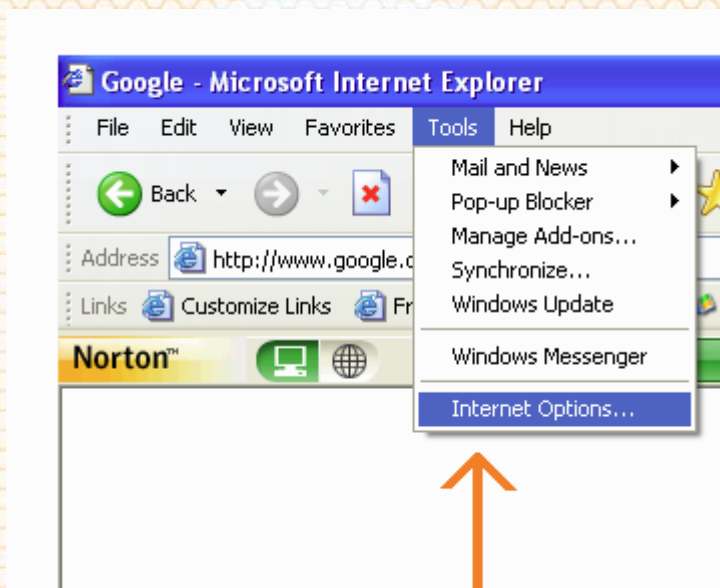


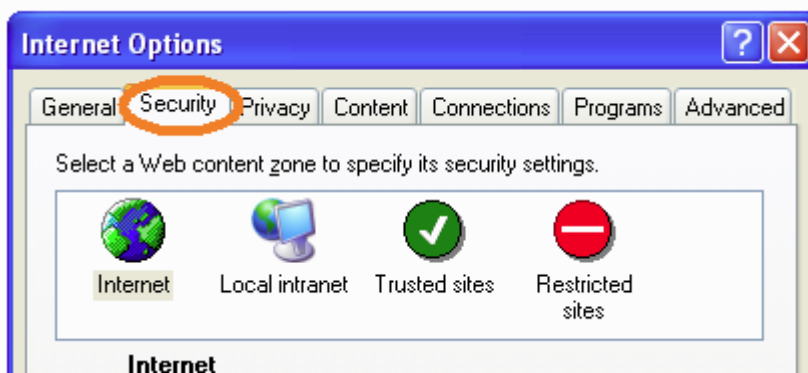
Zeus DVR Web Access Setup

This document describes the set up steps required for making remote access to the Zeus Family DVRs via Internet Explorer browser.

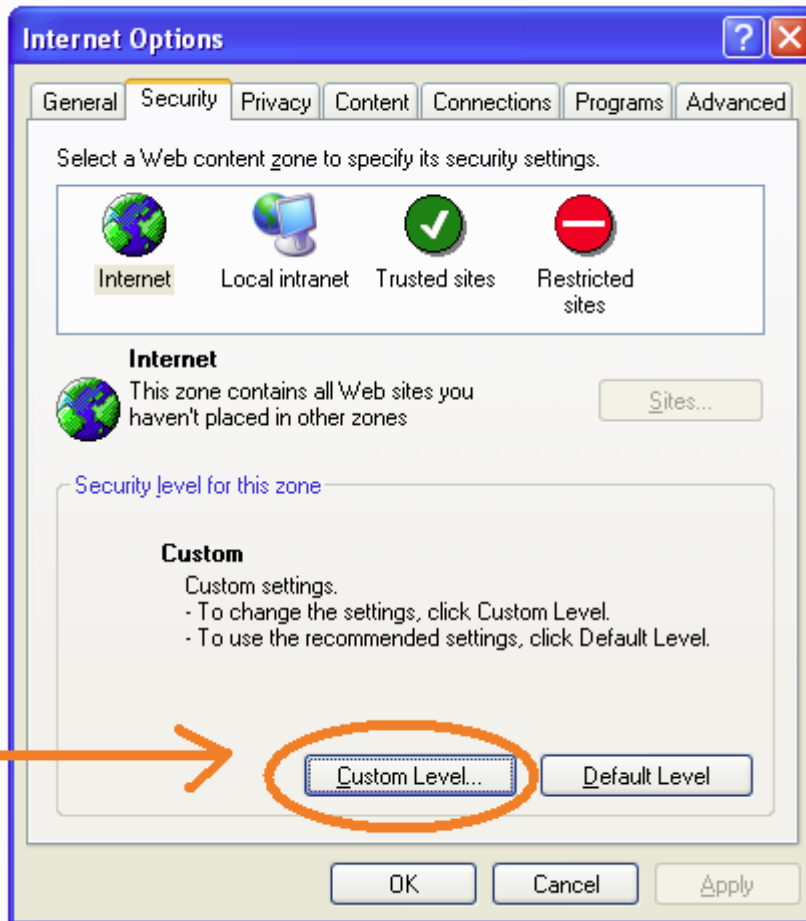
1. Open your internet Explorer
2. Go to **<Internet Options>** under the **<Tools>** menu.



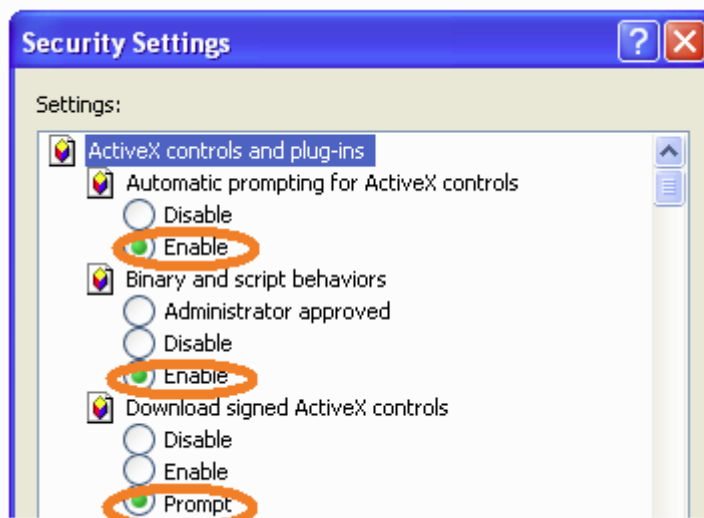
3. In the **<Internet Options>** Window click on the **<Security>** tab.



4. in the <Internet Options - Security> click on the option <Custom Level...> button



5. A window Called "Security Settings" should appear. In that window you must set all the parameters under the category "ActiveX controls and plug-ins" to enable (or to prompt, make sure that no one be set to disable)



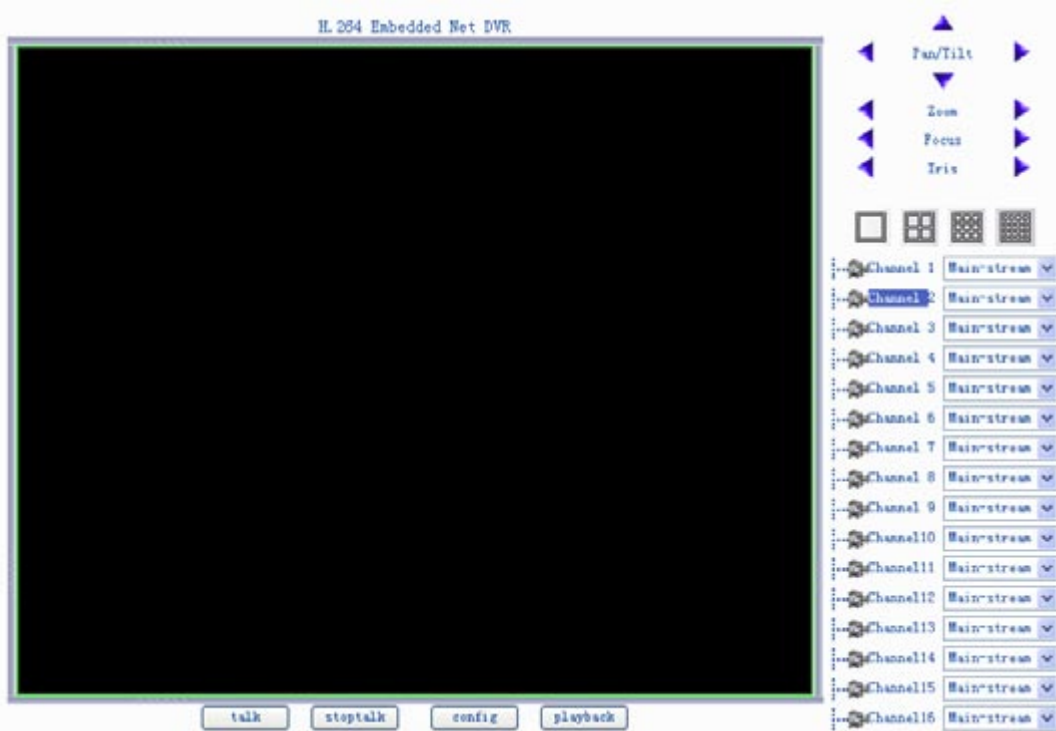
6. Close the Internet Explorer and open it again
7. Type in the IP address or the domain of your Zeus DVR/DVS



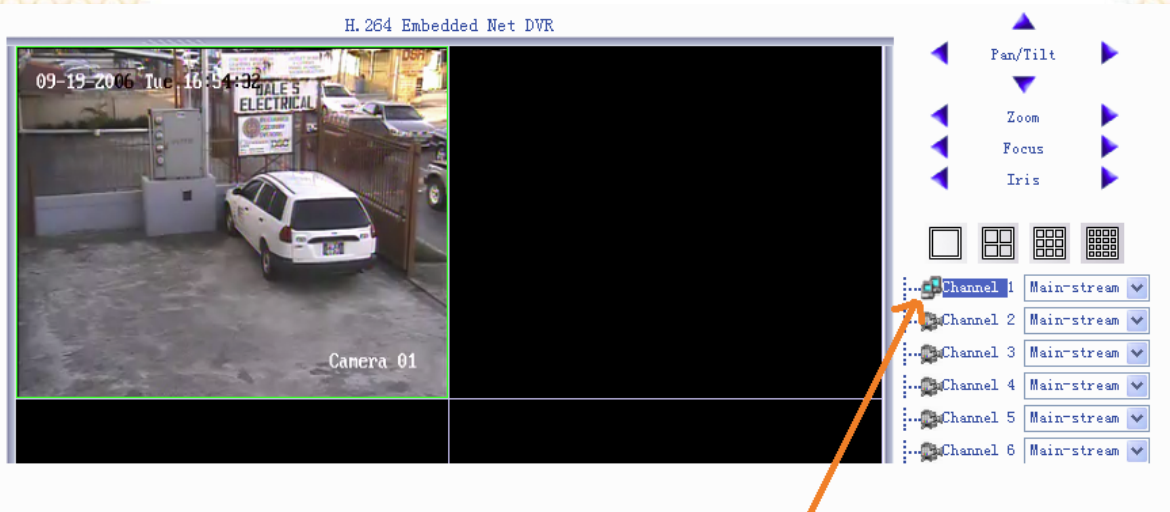
8. If it's the first time that you are accessing to the Zeus DVR, the system is going to ask for your permission to install some components required for the remote access. You have to accept the installation of all the required components.
9. When the installation is done, refresh the Internet explorer, you will get a login Window. Write the proper user name and password (the user must be created in the DVR)

A screenshot of a login window titled "Login". The window has a light purple background. It contains three input fields: "Username:" with an empty text box, "Password:" with an empty text box, and "Port:" with a text box containing the number "8000". Below these fields is a "Login" button.

10. If the login is successful you will have access to the Zeus DVR remote interface.



11. For enabling the Live view of the desired camera, you have to select the visualization mode:



Then one by one, you have to select the window screen where you want to put each camera, you will notice that you have selected a quadrant because the border of the selected quadrant will turn to green color.

Then, to activate the Live view of a camera, double click in the name of the channel. (Ej: channel 1, after that the icon next to the camera name should change)