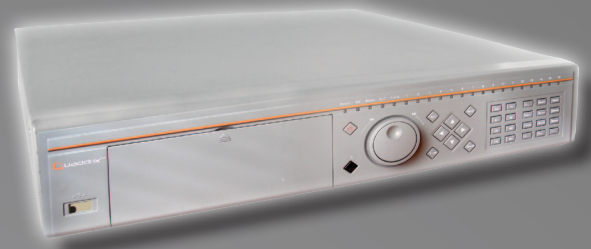


DVR QT-600 SERIES

Quaddrix is glad to present the new QT-600 stand alone DVR series. The traditional Quaddrix DVR's QT-500 series has evolved to become in the new Quaddrix QT-600 DVR series improving most of its well known features to give you top performance equipment in all its versions.

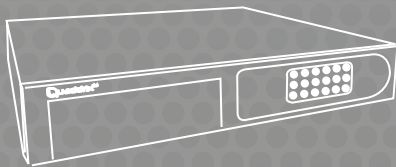


FULL INTEGRATION WITH QUADDRIX IP DEVICES AND **FREE NVR SOFTWARE** INCLUDED FOR LIVE VIEWING/RECORDING, E-MAP, ALARMS, PLAYBACK, BACKUP AND MORE.

HIGHLIGHTS

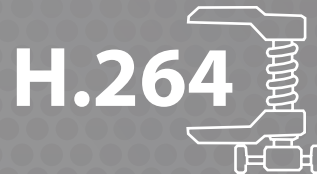
• NEW Appearance

New look (face plate and back panel)



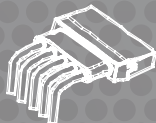
• H.264 Video Compression

The new QT-600 SATA DVR's incorporates H.264 which is the most advanced video compression algorithm available.



• SATA

The NEW Quaddrix QT-600 SATA DVR series uses the new Serial ATA (SATA) technology for data storage, which improves the storage capacity and data transition for storage and for backups. With this new Quaddrix DVR you also set the DVR make a redundant record in two or more HDD's to prevent a data missing or failure. Hibernation capabilities available.



• Real Time Rec

With the Quaddrix QT-500 you used to have only up 240Fps (depending of the model), now with the new QT-600 SATA DVR Series you are able to record real time video in all channels that means up to 480Fps (depending of the model).



- **Real Time Live Preview**
Real time preview (30 Images per second) at 740x480 NTSC resolution per channel.
Real time preview (25 Images per second) at 704x576 PAL resolution per channel.



- **USB 2.0**
The New QT-600 SATA DVR incorporates now two new USB 2.0 ports allowing you to have more than one USB device simultaneously like mouse for control and a USB storage device for backup



- **Up to 4 HDD for Storage Capacity:** in the new QT-600 SATA DVR series you can have up to 4 SATA HDDs (without CD/DVD-RW) for video and data storage providing you as much storage as the SATA technology can give:

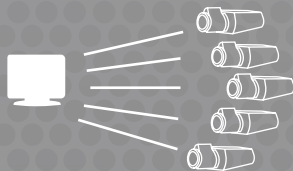


- When CD/DVD-RW installed only supports up to 3 HDDs

- **NAS Option:** with the new QT-600 DVR series you are not restricted by the physical storage capacity, this DVR gives you the option to expand the storage capacity enabling and using the NAS.



- **Multiplexed Data:**
The new Quaddrix QT-600 SATA DVR series offers you the option to multiplex several video data stream and send them in one single channel, perfect for Network video transmissions and for remote access live video.



- **New Powerful Client Software**
The QT-600 SATA series comes with a whole new built-in web server client software that provides you with new functions like e-mail and FTP notification for events and/or alarms.



- **New Firmware**
A new improved GUI (Graphic User Interface) firmware and remote video management software application that improves the end user experience making it easier to use, providing on screen tips for the menu usage.



- **Pentaplex**
Like the standard Zeus DVR's this new QT-600 can perform up to 5 tasks simultaneously like: live video, recording, playback, backup and remote access.



Technical Specifications

System

• Operatign System	LINUX (Embedded)
• System Resources	PENTAPLEX
• User Interface	GUI (with on screen menu tips)
• Control Devices	DVR's front panel, Mouse, IR remote control, Network, Keyboard (not included)

Video

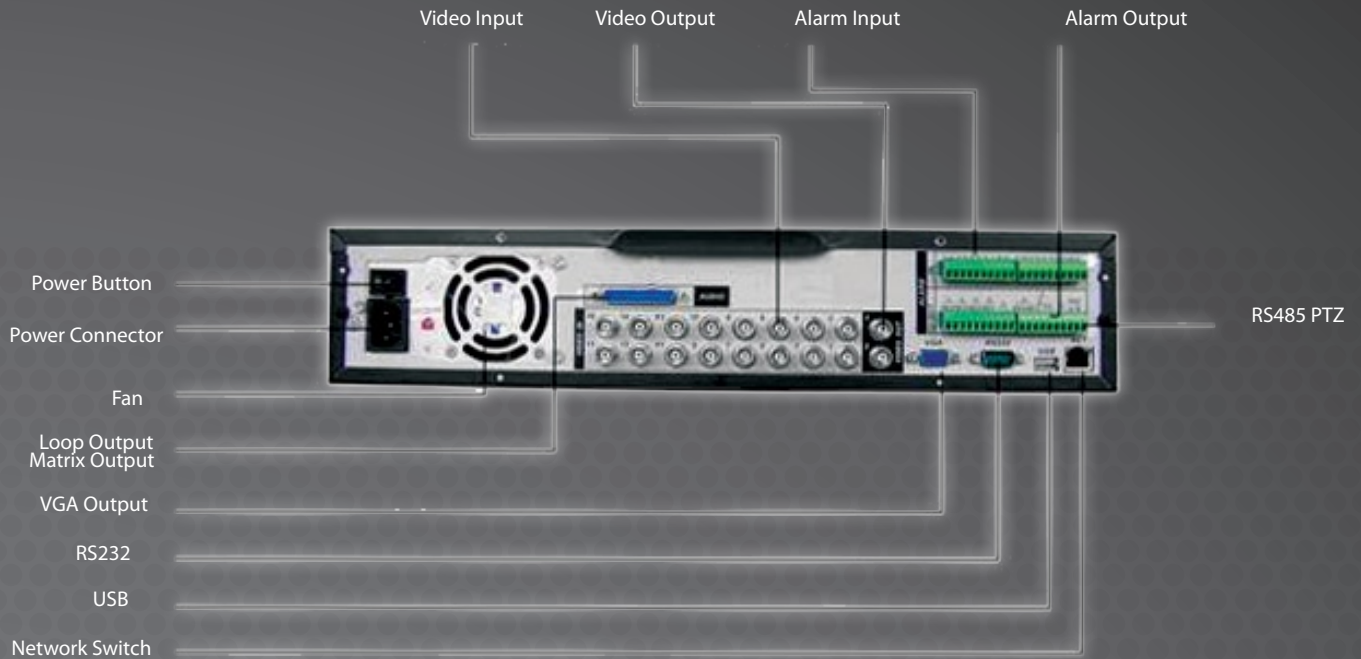
• Video Compression	H.264
• Preview Resolution	PAL: 704*576; NTSC: 704*480
• Video Resolution	CIF
• Recording Resolution	Up to CIF: 352x240(NTSC); 352x288(PAL)
• Frame Rate	Real Time: NTSC: (4ch 120FPS, 8ch 240FPS, 16ch 480FPS)@CIF PAL: (4ch 100FPS, 8ch 200FPS, 16ch 400FPS)@CIF
• Video Input	4/8/16
• Video Input Interface	BNC (Electrical Level: 1Vp-p; Resistance: 75Ω)
• Video Output	2Ch BNC output 1Ch VGA
• Matrix Output	Yes (1Ch)
• Preview Screen Layout	1/4/8/9/16
• Preview Tour	Yes
• Camera Video Lock	Yes
• Recording Interval	1 to 12min (configurable)

Audio

• Audio Compression	ADPCM
• Audio Input	4Ch BNC, 200~2800Mv, 30kΩ
• Cross Talking Input	1Ch BNC, 200~2800Mv, 30kΩ
• Audio Output	1Ch BNC, 200~3000Mv, 5kΩ

Video Management

• Motion Detection	Yes (16*12, detection zones)
• Video Lost	Yes
• Camera Block (View Tampering)	Yes
• Digital Zoom	Yes
• Alarm Input	16Ch
• Relay Ouput	3/6 Ch, 30V DC, 1A, NO/NC, form-C
• Storage Capacity	Up to 4 SATA HDD's (without CD-DVD-R/RW) Up to 3 HDD's with CD/DVD-R/RW (not included)
• HDD Management	HDD hibernation technology, HDD faulty alarm and redundancy capability
• Backup Mode	USB Flash drive/ USB HDD/ USB CD-RW/DVD-RW/ SATA CD-RW/DVD-RW/ network download



Network and Auxiliary Interfaces

• Network Interface	10/100M Fast Ethernet, RJ-45
• Network Functions	TCP/IP, DHCP, PPPoE, DDNS, E-Mail, FTP
• Remote Operation	Yes (through client software and web browser)
• USB	Yes 2 Ports USB 2.0
• Serial Port	Yes 1 RS232 serial port
• RS485	Yes 1 port for PTZ control

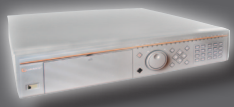
Electrical and Environmental

• Power Supply	220V 50Hz/110V 60Hz
• Power Consumption	25~40W (Max)
• Working Temperature	-10°C~+55°C
• Working Humidity	10%~99%
• Atmosphere Pressure	86KPa~106KPa

Mechanical

• Dimensions	440mm(W) x 460mm(D) x 68mm(H)
• Weight	6.0Kg
• Mounting	Desktop or rack

DVR Product Comparison Chart



	Video Out	Audio Input	Talk Input	Audio Out	Loop/ Matrix	Alarm In	Alarm Out	HDD Support	CD/DVD RW Support
QT-600-04N-S	1(BNC)+1(VGA)	4(BNC)	N/A	1	N/A	4	3	4	Yes
QT-600-08N-S	2(BNC)+1(VGA)	4(BNC)	1(BNC)	1(BNC)	8,1	16	6	4	Yes
QT-600-16N-S	2(BNC)+1(VGA)	4(BNC)	1(BNC)	1(BNC)	16,1	16	6	4	Yes

* When CD/DVD RW installed only 3HDD supported

QT-ZEUSII-04N-S-6HDD	2(BNC)+1(1VGA)	4(BNC)	1(BNC)	1(BNC)	4,1	16	6	6	Yes
QT-ZEUSII-08N-S-6HDD	2(BNC)+1(1VGA)	4(BNC)	1(BNC)	1(BNC)	8,1	16	6	6	Yes
QT-ZEUSII-16N-S-6HDD	2(BNC)+1(1VGA)	4(BNC)	1(BNC)	1(BNC)	16,1	16	6	6	Yes
QT-ZEUSII-04N-S-8HDD	2(BNC)+1(1VGA)	4(BNC)	1(BNC)	1(BNC)	4,1	16	6	8	No
QT-ZEUSII-08N-S-8HDD	2(BNC)+1(1VGA)	4(BNC)	1(BNC)	1(BNC)	8,1	16	6	8	No
QT-ZEUSII-16N-S-8HDD	2(BNC)+1(1VGA)	4(BNC)	1(BNC)	1(BNC)	16,1	16	6	8	No