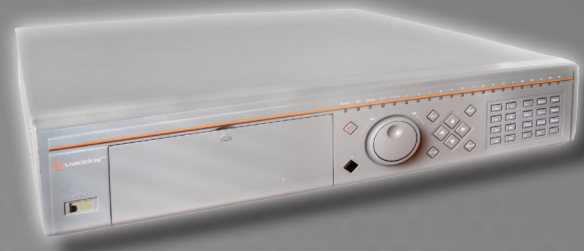


## DVR ZEUS II SATA SERIES

Quaddrix is glad to present the new ZEUS II stand alone DVR series. The traditional Quaddrix DVR's Zeus series has evolved to become in the new Quaddrix ZEUS II DVR series improving most of its well known features to give you top performance equipment in all its versions.

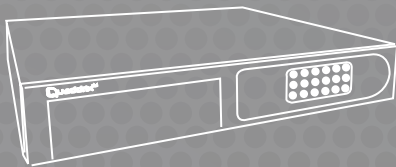


FULL INTEGRATION WITH QUADDRIX IP DEVICES AND **FREE NVR SOFTWARE** INCLUDED FOR LIVE VIEWING/RECORDING, E-MAP, ALARMS, PLAYBACK, BACKUP AND MORE.

## Features

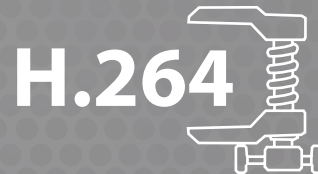
- **NEW Appearance**

New look (face plate and back panel)



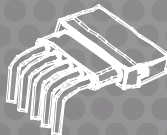
- **H.264 Video Compression**

Zeus II DVR's incorporates H.264 which is the most advanced video compression algorithm available



- **SATA**

The NEW Quaddrix Zeus II DVR series uses the new Serial ATA (SATA) technology for data storage, which improves the storage capacity and data transmission speed for storage and backups. With this new Quaddrix DVR you also set the DVR, make a redundant record in two or more HDD's to prevent a data missing or failure. Hibernation capabilities available.



- **Pentaplex**

Like the standard Zeus DVR's this new Zeus II can perform up to 5 tasks simultaneously like: live video, recording, playback, backup and remote access.



• **USB 2.0**

The New Zeus II DVR incorporates now two new USB 2.0 ports allowing you to have more the one USB device simultaneously like mouse for control and a USB storage device for backup.



• **4CIF In All Channels**

Now you can have a 4CIF recording resolution in all channels at 200~240fps.

**4CIF**  
recording  
resolution

• **Real Time Live preview**

Real time preview (30 Images per second) at 740x480 NTSC resolution per channel.  
Real time preview (25 Images per second) at 704x576 PAL resolution per channel.



• **Up to 8 HDD for Storage Capacity**

In the new Zeus II DVR series you can have up to 6 SATA HDD's + CD/DVD-RW option, for video and data storage (in standard configuration)



• With **QT-DVRBRKT-8HDD**, supports 8 HDDs, without CD/DVD-RW

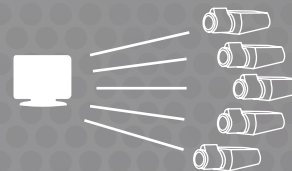
• **NAS Option**

With the new Zeus II DVR series you are not restricted by the physical storage capacity, this DVR gives you the option to expand the storage capacity enabling and using the NAS. (Network Attached Storage) This special function can expand as much as you like your DVR storage capacity in a secure way.



• **Multiplexed Data:**

The new Quaddrix Zeus II DVR series offers you the option to multiplex several video data stream and send them in one single channel, perfect for network video transmissions and for remote access live video.



• **New Powerful Client Software**

The Zeus II SATA series comes with a whole new built-in web server client software that provides you with new functions like e-mail and FTP notification for events and/or alarms.

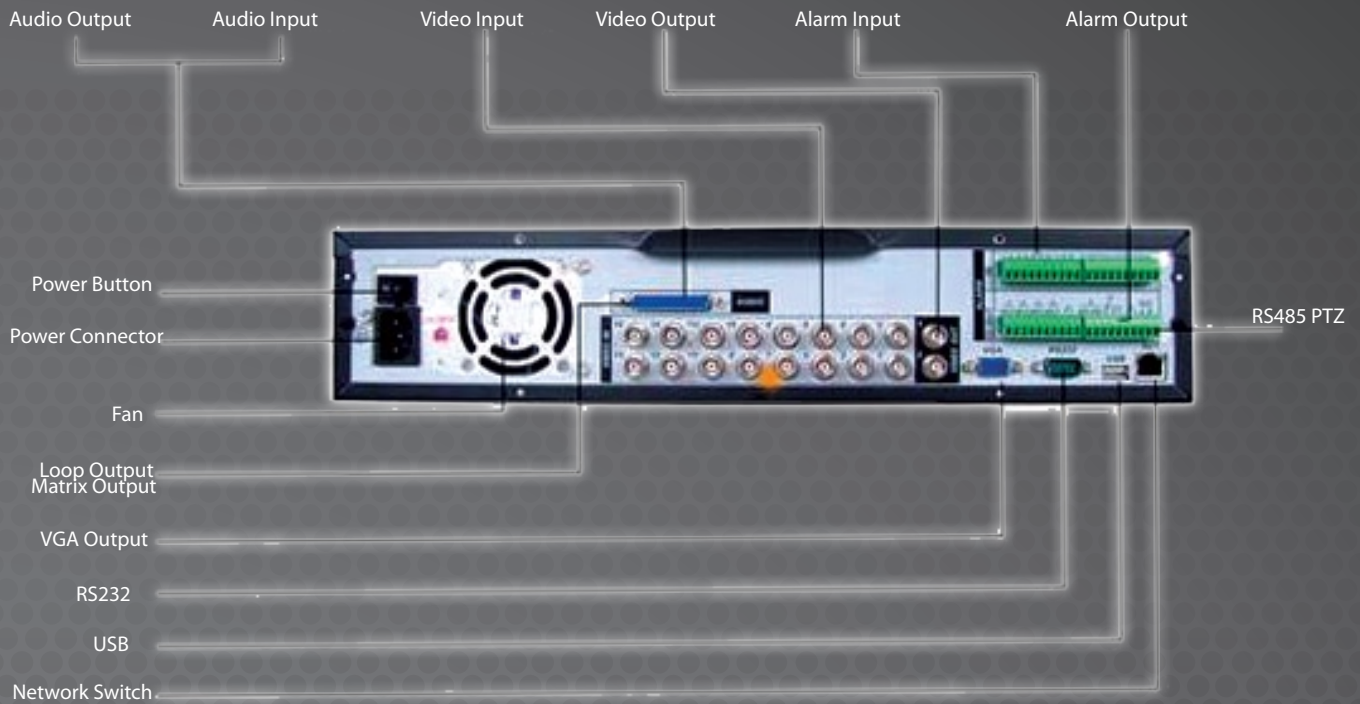


• **New Firmware**

A new improved GUI (Graphic User Interface) firmware and remote video management software application that improves the end user experience making it easier to use providing on screen tips for the menu usage.



## Back Pannel



## Technical Specifications

### System

- |                    |   |
|--------------------|---|
| • Operatign System | Linux (Embedded)  |
| • System Resources | Pentaplex   |
| • User Interface   | GUI (with on screen menu tips)  |
| • Control Devices  | DVR's front panel, Mouse, IR remote control, Network, Keyboard (not included) |

## Video

• Video Compression	H.264
• Preview Resolution	PAL: 704*576; NTSC: 704*480
• Video Resolution	Up to D1(4CIF): 704x480(NTSC); 704x576(PAL)
• Recording Resolution	D1(4CIF): 704x480(NTSC);704x576(PAL); 2CIF: 704x240(NTSC);704x288(PAL) CIF: 352x240(NTSC); 352x288(PAL) QCIF: 176x120(NTSC); 176x144(PAL)
• Frame Rate	NTSC: (4ch 60FPS, 8ch 120FPS, 16ch 240FPS)@4CIF PAL: (4ch 50FPS, 8ch 100FPS, 16ch 200FPS)@4CIF Real time: NTSC: (4ch 120FPS, 8ch 240FPS, 16ch 480FPS)@2CIF PAL: (4ch 100FPS, 8ch 200FPS, 16ch 400FPS)@2CIF
• Video Input	4/8/16
• Video Input Interface	BNC (Electrical Level: 1Vp-p; Resistance: 75Ω )
• Video Output	2Ch BNC video output 1Ch VGA
• Matrix Output	Yes (1Ch)
• Preview Screen Layout	1/4/8/9/16
• Preview Tour	Yes
• Camera Video Lock	Yes
• Recording Interval	1 to 12min (configurable)

## Audio

• Audio Compression	ADPCM
• Audio Input	4Ch BNC, 200~2800Mv, 30kΩ
• Cross Talking Input	1Ch BNC, 200~2800Mv, 30kΩ
• Audio Output	1Ch BNC, 200~3000Mv, 5kΩ

## Video Management

• Motion Detection	Yes (16*12, detection zones)
• Video Lost	Yes
• Camera Block (View Tampering)	Yes
• Digital Zoom	Yes
• Alarm Input	4/16/16 Ch (depending of the model)
• Relay Output	6 Ch, 30V DC, 1A, NO/NC, form-C
• Storage Capacity	Up to 8 SATA HDD's (without CD-DVD-R/RW) Up to 6 HDD's with CD/DVD-R/RW (not included)
• Hdd Management	HDD hibernation technology, HDD faulty alarm and redundancy capabilities
• Backup Mode	USB Flash drive/ USB HDD/ USB CD-RW/DVD-RW/ SATA CD-RW/DVD-RW/ network download

## Network and Auxiliary Interfaces

• Network Interface	10/100M Fast Ethernet, RJ-45
• Network Functions	TCP/IP, DHCP, PPPoE, DDNS, E-Mail, FTP
• Remote Operation	Yes (through client software and web browser)
• USB	Yes 2 Ports USB 2.0
• Serial Port	Yes 1 RS232 serial port
• RS485	Yes 1 port for PTZ control

## Electrical and Environmental

• Power Supply	220V 50Hz/110V 60Hz
• Power Consumption	25~40W (Max)
• Working Temperature	-10°C~+55°C
• Working Humidity	10%~99%
• Atmosphere Pressure	86KPa~106KPa

## Mechanical

• Dimensions	440mm(W) x 460mm(D) x 89mm(H)
• Weight	7.0Kg
• Mounting	Desktop or rack

## DVR Product Comparison Chart



	Video Out	Audio Input	Talk Input	Audio Out	Loop/ Matrix	Alarm In	Alarm Out	HDD Support	CD/DVD RW Support
QT-600-04N-S	1(BNC)+1(VGA)	4(BNC)	N/A	1	N/A	4	3	4	Yes
QT-600-08N-S	2(BNC)+1(VGA)	4(BNC)	1(BNC)	1(BNC)	8,1	16	6	4	Yes
QT-600-16N-S	2(BNC)+1(VGA)	4(BNC)	1(BNC)	1(BNC)	16,1	16	6	4	Yes

\* When CD/DVD RW installed only 3HDD supported

QT-ZEUSII-04N-S-6HDD	2(BNC)+1(1VGA)	4(BNC)	1(BNC)	1(BNC)	4,1	16	6	6	Yes
QT-ZEUSII-08N-S-6HDD	2(BNC)+1(1VGA)	4(BNC)	1(BNC)	1(BNC)	8,1	16	6	6	Yes
QT-ZEUSII-16N-S-6HDD	2(BNC)+1(1VGA)	4(BNC)	1(BNC)	1(BNC)	16,1	16	6	6	Yes
QT-ZEUSII-04N-S-8HDD	2(BNC)+1(1VGA)	4(BNC)	1(BNC)	1(BNC)	4,1	16	6	8	No
QT-ZEUSII-08N-S-8HDD	2(BNC)+1(1VGA)	4(BNC)	1(BNC)	1(BNC)	8,1	16	6	8	No
QT-ZEUSII-16N-S-8HDD	2(BNC)+1(1VGA)	4(BNC)	1(BNC)	1(BNC)	16,1	16	6	8	No