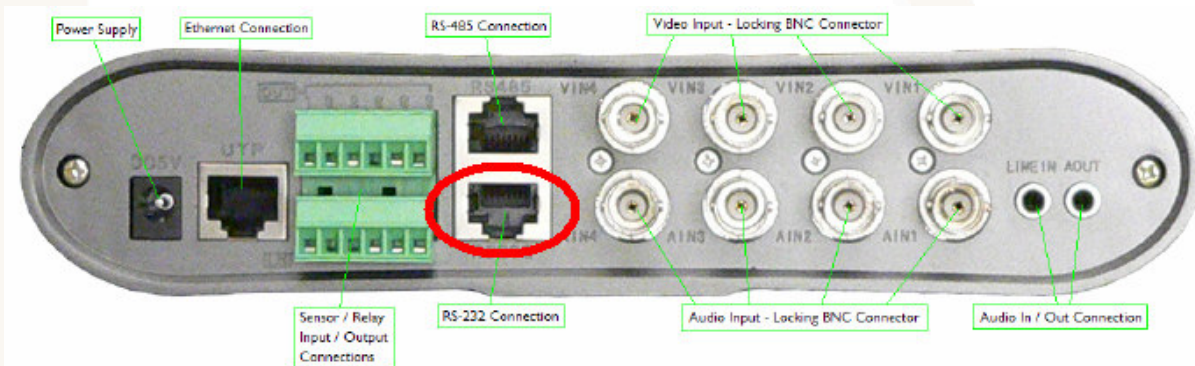


QT-SERVER Initial Network Setup

The first step for connecting the QT-Server is setting up the IP address, and the network configuration for the remote access. This is achieved by connecting the QT-Server to a computer using the RS232 serial port located in the back of the DVS.



Connect the RS-232 serial port of you Windows workstation or laptop with the RS-232 serial port of video server. (This cable is provided with the QT-Server, it has a serial port DB25 connection on one end and an RJ-45 connection on the other.)

Windows HyperTerminal is located in the following path under the Windows Start Menu:

Start → Programs → Accessories → Communications → Hyper Terminal

The following dialogue box below will appear.

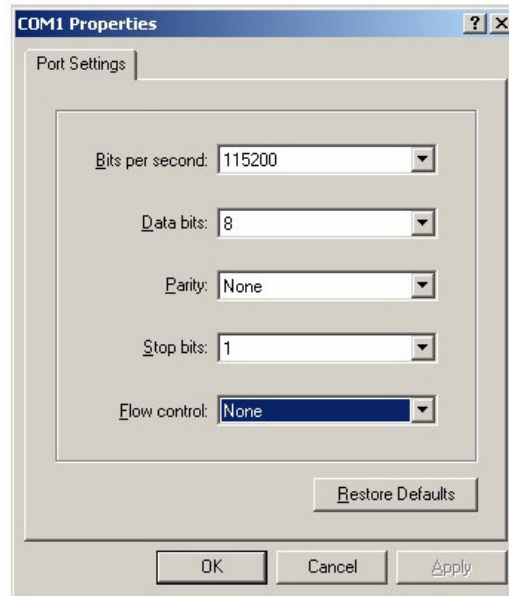


Input a name, select an icon, and press "OK", and the next dialogue box appears.



Select the communication port. Usually this is COM1 or COM2. (Note that some PC's have varied COM port settings for many purposes. You can use Windows Device Manager to look for your COM ports and configure their settings.) Click OK.

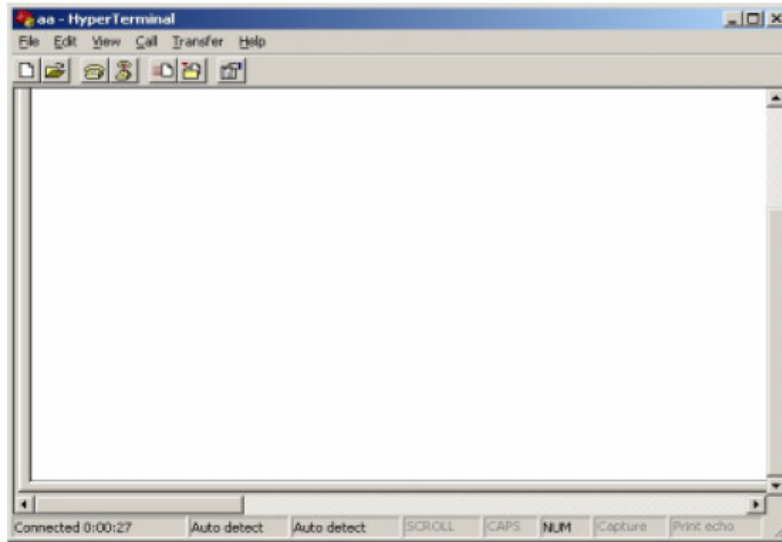
Once you selected the communication port, you'll have to configure the port in the following window.



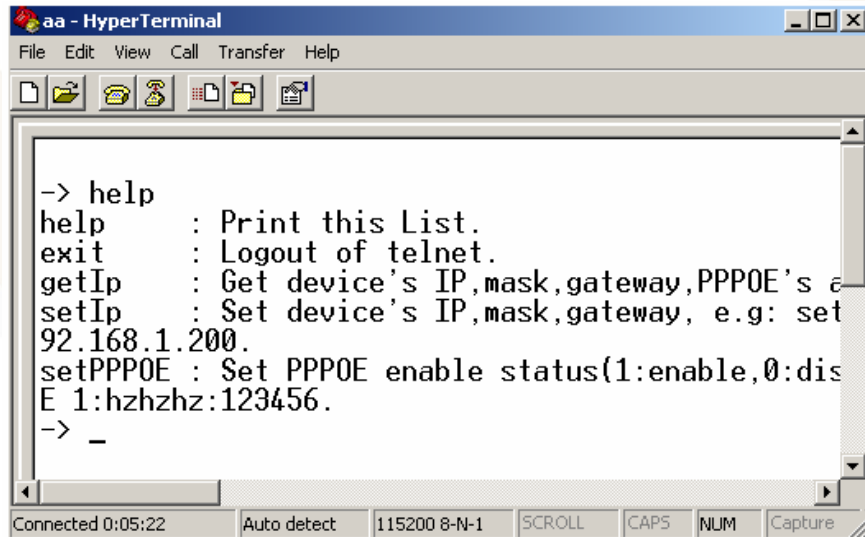
Set the serial port parameters as the following setup:

Bits per second: 115200
Data bits: 8
Parity: None
Stop bits: 1
Flow control: None

Press **OK** after finish, the HyperTerminal window will appear. If you connect properly you should see a brief connection message, and then the simple prompt.



Type **'help'** and press <enter> to see the list of available commands:
Note: All commands are case sensitive.





9578 N.W 41St.
Miami, Florida, 33178
tel: (305) 594 2711
fax: (305) 675 0132
www.quaddrix.com

Cra. 16 A No. 79 - 86
Tel. (571)256 5862 - 610 9462
Fax: (571)618 1491
Bogotá, D.C. Colombia
www.quaddrix.com

Enter the command **getIp** to see the current IP configuration for the device.

Often this is enough information to figure out how to connect to the DVS and complete the normal Networking and other configuration. If you want, you can use the **setIp** command to change the networking configuration.

The command parameters for setIp are as follows:

setIp [IP Address]:[Subnet Mask]:[Gateway]

Example: setIp 10.80.80.130:255.255.255.0:10.80.80.1

Once you are done, you can click the HyperTerminal 'disconnect' button. Then, power cycle the DVS (unplug and then plug in the DVS to its power source) to make the changes take effect.

From here, you should be able to connect to the DVS via the IP Address designated.